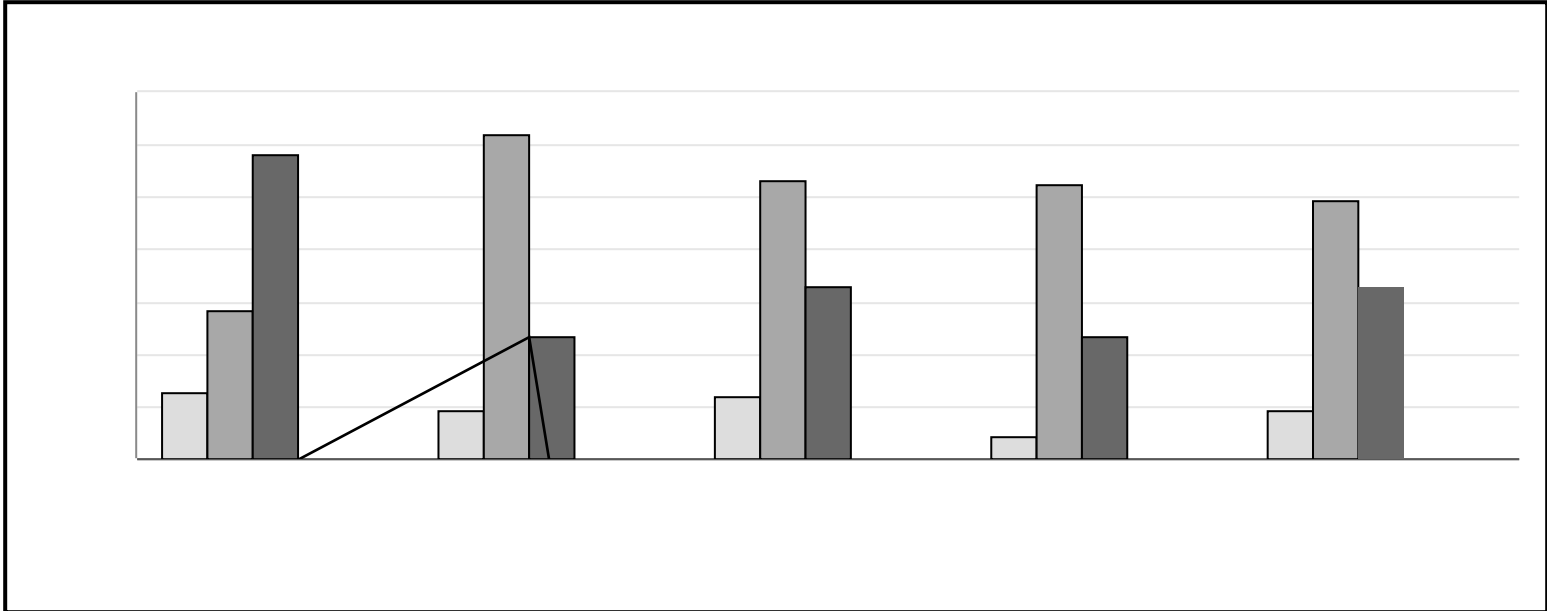


sales: percentage change from prior year



(\$!) & ° "1 , () * # + # ,



Fiscal Year	1Q	2Q	3Q	4Q	Year
2023	10%	15%	20%	18%	15%
2022	12%	18%	22%	20%	18%
2021	10%	15%	25%	18%	18%
2020	12%	18%	22%	20%	18%
2019	10%	15%	20%	18%	15%

(\$!) & ° "1 , () * # + # ,

(\$!) & ° "1 , () * # + # ,